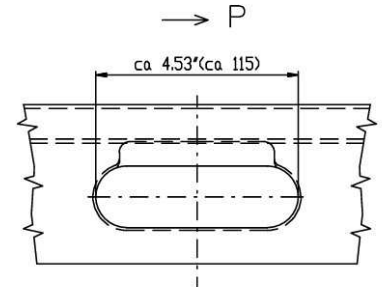
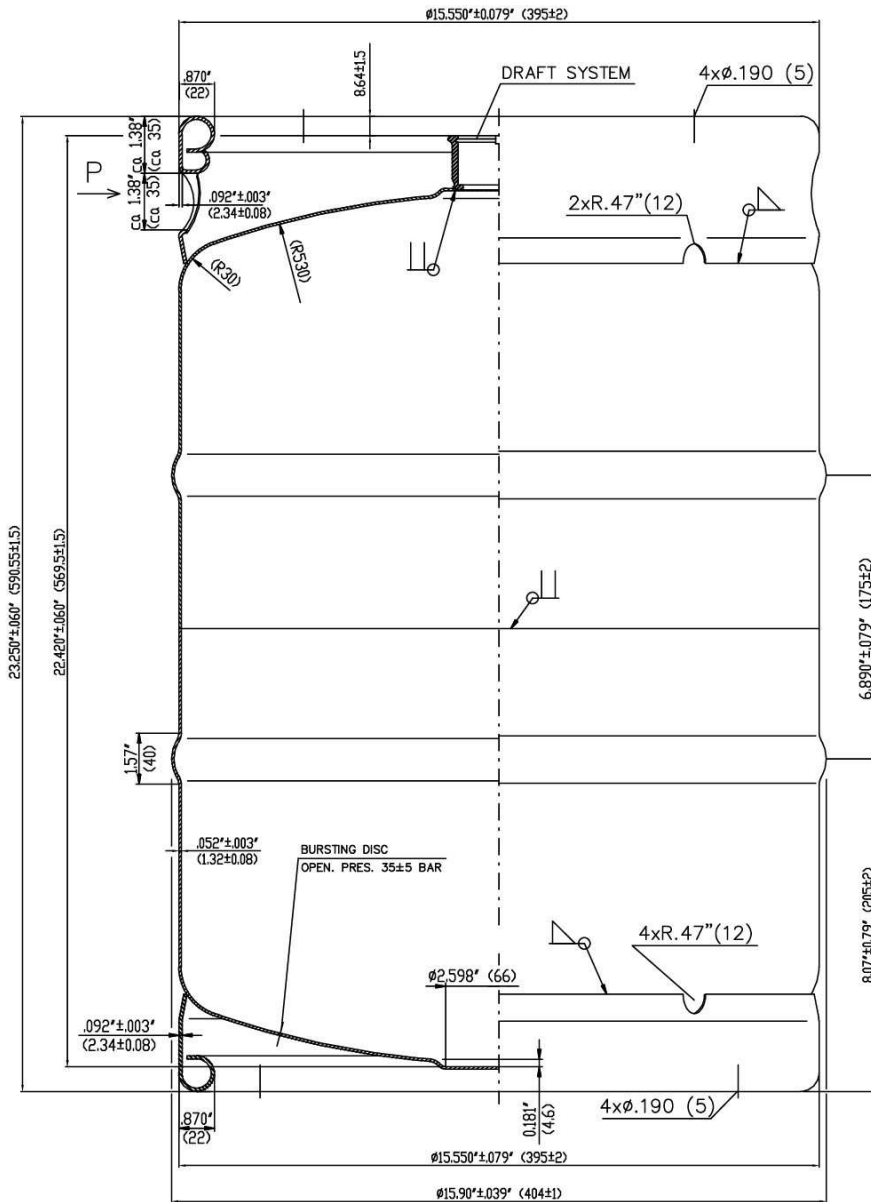


SPECSHEET

MIN. WALL THICKNESS: 0.053"/1.35mm



WELDS 1.5 ▽ MADE BY MAG METHOD
WELDS II MADE BY WIG METHOD EN ISO 5817-C

AFTER WELDING - PICKLE
NOMINAL VOLUME 15.5 U.S. GAL(58.66L)
VOLUME 15.7±0.05U.S.GAL (59.43L±0.19L)

INDEX	DATE	SIGN		
CHANGE				
STUFF	1.4301	W.No.	WEIGHT kg	SCALE
SEMPRODUCT				
HELPING DEVICE				
DRAWN BY	PROS	NORM OFFICER	NOTICE	PIECE No.
APPROVED BY	JIRKŮ			
TECHNOLOGIST		AUTHORIZED	5.2.2014	OLD DRAWING:
NAME:	2.34-132-234			DRAWING No.
15.5 U.S. GAL			54-1231/B	Page

ALL INFORMATION LISTED IS PROPRIETARY AND MAY NOT BE SHARED OUTSIDE YOUR ORGANIZATION WITHOUT THE PRIOR, WRITTEN, CONSENT OF SCHAEFER CONTAINER SYSTEMS